

## ADDITIONAL MEMBERS ONLY BENEFITS

(with the approval of PSEA)

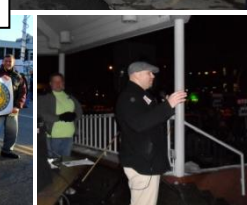
In addition to the many money-saving programs already available to NEA members in Pennsylvania, your local's affiliation with the AFL-CIO will entitle you to the following Members Only Benefits:

- Legal Services
- Debt Management Help
- Credit/Budget Counseling
- Movie Ticket Discounts
- Theme Park Discounts
- Goodyear Tire Discounts
- AT&T Wireless Discounts
- Dell Computer Discounts
- Clothing Discounts
- Pet Savings
- Union Plus Motor Club
- Budget Truck Discounts
- Home Energy savings
- HVAC Rebates
- Health Savings
- Union SAFE Grants
- Retirement Planning Center
- Fee Free Annuities
- Scholarships available at the State, ALF & CLC levels

OUR MOST VALUED ASSET



S  
O  
L  
I  
D  
A  
R  
I  
T  
Y  
!



**AFL-CIO • NEA**

**Labor**

**Solidarity**

**Partnerships**



Working Together,  
Winning Together

Why  
NEA Locals  
should

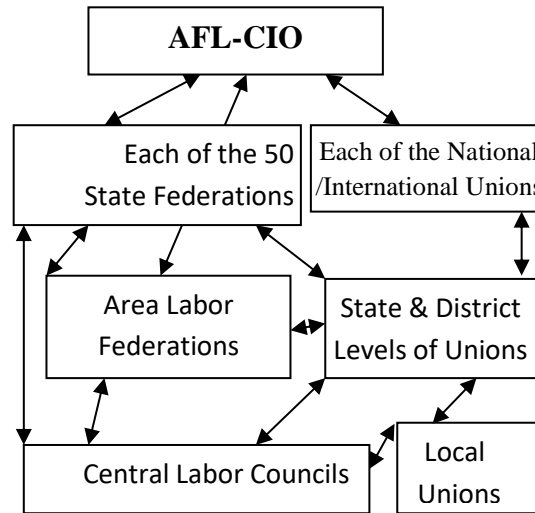
Affiliate with  
The AFL-CIO

## BENEFITS OF AFFILIATION WITH THE AFL-CIO

The most important reason for affiliating with the AFL-CIO is the Solidarity and Power created by the joining of these two great organizations. Below is a list of specific benefits immediately available to PSEA locals upon affiliation:

- **Integration of membership files** with the files of 45,000 AFL-CIO union members in northwestern Pennsylvania and 800,000 active members statewide enabling us to elect endorsed candidates in school board, county, municipal and state elections.
- **Coordinated political campaigns** with the AFL-CIO which uses the most sophisticated technology including list enhancement, mapping, walk lists, customized leaflets that will include your priority issues, and membership contact programs.
- **Mobilization of AFL-CIO union members** to pressure the school board during a contract campaign with rallies, demonstrations and other solidarity actions.
- **A seat at the table where decisions are made by the AFL-CIO**, so we can be assured that your issues are in the forefront when decisions are made about labor's priorities.
- **Another powerful advocate at the state capital to join with us** in speaking with one voice on collective bargaining, state budgets, pensions and educational policy.
- **Support from Community Services liaisons** who provide advice and assistance when members are on strike, laid off or simply down on their luck.

## NATIONAL AFL-CIO STRUCTURE



The National AFL-CIO represents over 10,000,000 workers today. There are 50 State Federations and one in Puerto Rico of which some have established Area Labor Federations (ALF) regionally. ALF's consist of between 1-10 Central Labor Councils.

The Northwestern Pennsylvania Area Labor Federation (NWPALF) covers 19 counties, has 10 Central Labor Councils, 232 affiliated Local Unions and approximately 42,300 members in those unions represented by 33 International/National Unions.

The Central Labor Councils are autonomous and meet monthly. The NWPALF Area Labor Federation meets Quarterly.

For more information call 814-360-8336 or email us at [nwpaalf@gmail.com](mailto:nwpaalf@gmail.com) or visit: <http://pa.aflcio.org/nwpaalf>.

## NORTHWEST PENNSYLVANIA AREA LABOR FEDERATION PER CAPITA TAX RATES

Per capita tax rates shown are based on current per capita rates, which are subject to change based on action by the relevant delegate body. Directly Affiliated NEA Locals (DANLs) may choose either of two ways to fulfill their affiliation financial obligations:

1. Pay the full per capita tax (a per member per month fee) from the date of receipt of the AFL-CIO charter and receive full voting rights according to the rules of the relevant AFL-CIO body's constitution and bylaws, or
2. Reach the required per member per month per capita tax over three-years through a phase-in program. This option will reduce costs for the first two years of affiliation and will also lengthen the time for the DANL to reach full voting strength.

AFL-CIO/NEA Phase in Affiliation Program				
	AFL-CIO	PA AFL-CIO	NWPALF	Total
Affiliation Rates	\$ 0.65	\$ 0.55	\$ 0.37	\$ 1.47
(per member per month)				
1st Year of affiliation	\$ 0.13	\$ 0.18	\$ 0.12	\$ 0.43
(80% reduction at national and 2/3 reduction at State and ALF)				
2nd Year of affiliation	\$ 0.26	\$ 0.30	\$ 0.25	\$ 0.91
(60% reduction at National level and 1/3 reduction at State and ALF)				
3rd Year of affiliation	\$ 0.39	\$ 0.55	\$ 0.37	\$ 1.31
(40% deduction at national)				