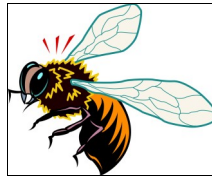


# UNION



# BUG

A Newsletter of the Beaver-Lawrence Counties Central Labor Council

VOLUME 5 ISSUE 12

AUGUST 2019

## LABOR COUNCIL OFFICERS

- **President:**  
Richard Galiano  
USW 9305
- **Ex. Vice President:**  
Dan Onuska  
IBEW 29
- **Recording Secretary:**  
Lisa Alexander  
AFSCME 2902
- **Secretary-Treasurer:**  
Mel Ice  
SOAR
- **Vice Presidents:**
  - John Howard Thompson  
AFSCME 2902
  - Bernie Hall  
USW 8183
  - Linwood Alford  
LIUNA 833
  - Mark Benkart  
IBEW 29
  - Kerri Theuerl  
SEIU HCPA
- **Trustees:**
  - Jan Carpenter  
SEIU 668
  - Laurie Fisher  
AFSCME 2902
  - Rev. Kevin Lee  
IBEW 29
  - Jody Kohser  
SEIU 668
  - Alicia Craig  
AFSCME 2902
  - Sara Dudash  
SEIU 668
  - Tom Flook  
IUPAT 530

## Join The Labor Day Celebrations

By Mike Cicconi  
IAMAW L.L. 1976 Grievance  
Committee Chairman

Beginning in the late 19<sup>th</sup> century, as the Labor Movement grew, trade unionists proposed that a day be set aside to celebrate working people. The Central Labor Union and the Knights of Labor organized the first parade in New York City on September 5, 1882, and Labor Day was born.

In 1887, Oregon was the first state to designate Labor Day an official public holiday. A total of 30 states would officially celebrate the contributions of working people before the United States finally recognized the importance in 1894, by declaring Labor Day a federal holiday.

From the coal mines and steel mills of the past, to the health care, technologies and manufacturing industries of today, western Pennsylvania, including Beaver County and Lawrence County, boasts a rich labor history. Every year, workers from all professions are joined by elect-

ed officials and visitors to participate in the Allegheny-Fayette Central Labor Council Labor Day Parade in Pittsburgh and the Northwest Pa. Area Labor Federation Labor Day Parade in Erie. It's a great opportunity to share professional pride, highlight our occupations and promote union affiliations.

The parades go through downtown Pittsburgh and downtown Erie and are often followed by union picnics for an overall great family event.

For the past 37 years, the Allegheny Labor Council has put on the largest participation Labor Day parade in the United States. The parade begins at 10:00 AM at the PPG Paints Arena.

The NWPA ALF parade is in its third year and growing. Marchers will assemble at 9:30 AM at 11<sup>th</sup> Street and State Street and the parade will begin at 10:00 AM.

Additionally, the Greater Westmoreland Central Labor Council participates every year in the two-day Labor Day Celebration at Northmoreland Park in West-

moreland County.

Labor Day doesn't belong to the corporations or the rich. Labor Day is a workers' day. That is you and me and everyone else who toils. It's a day to take an appreciative look back on the victories that make working people's lives better – minimum wage, safety and health laws, 40-hour work week – and build support for the battles we fight today – retirement security, job protections and fair taxes.

Being part of a Labor Day parade promotes social time with co-workers or creates an opportunity to meet new people. Whether you're walking with a friend or standing next to a stranger, it's empowering to see how many people are bound together as workers.

We in Beaver County and Lawrence County are proud of our Labor heritage; we are valiant workers and Labor Day is OUR day. Join the Labor Day celebrations.

**LABOR DAY  
2019**

## For The Record

By Kerri Theuerl  
Labor Council Vice-President,  
Acting Recording Secretary

*achieve their goals just as you have helped me.  
Thank you again for your generosity and support.*

*Sincerely,  
Grace M. Canchola*

### Correspondences:

Received letter from Grace M. Canchola, as follows:

*Dear Beaver-Lawrence Central Labor Council,*

*I am writing to thank you for your generous Donald McNutt Memorial Scholarship. I was thrilled and appreciative to learn that I was selected as the recipient of your scholarship.*

*While attending Mansfield University of Pennsylvania, I will pursue a bachelor's degree in Respiratory Therapy. My lifelong goal is to help people who suffer from chronic respiratory diseases and disorders. Thanks to you, I am one step closer to that goal.*

*By awarding me the Donald McNutt Memorial Scholarship, you have lightened my financial burden. The financial assistance you provided will be of great help to me in paying my educational expenses, and it will allow me to concentrate more of my time for studying.*

*Your generosity has inspired me to help others and give back to the community. I solemnly promise in the future to pay it forward and help students*

### Delegates meeting highlights:

Trustee Jodi Kohser reported on the Protecting the Right to Organize (PRO) Act. The Act streamlines the process for NLRB elections to stop employers from interfering in organizing drives and delaying votes, prohibits management from forcing workers to attend anti-union captive-audience meeting, and requires companies to bargain in good faith, among its many proposals to protect and restore workers' rights. It was unveiled May 2<sup>nd</sup> by a coalition of 40 Democrats in the U.S. Senate and 100 in the House of Representatives. She also reported on the need to stand in solidarity with striking Amazon workers.

Vice-President Kerri Theuerl reported on the need for tighter nurse staffing legislation and mandated nurse to patient ratios for acute care hospitals. She also reported on the need to improve patient standards in long term care facilities by raising the patient contact hours per day from 2.7 hours to 4.1 hours.

## UNION BUG

Published Monthly

An official publication of the  
Beaver/Lawrence Central Labor Council

P.O. Box A, Beaver, PA 15009

Editor - Victor Colonna  
v.colonna@comcast.net

Asst. Editor - Steven Kocherzat  
steven6700@comcast.net

### NEWSPAPER COMMITTEE

Bernie Hall

### CALENDAR OF EVENTS COMMITTEE

Jody Kohser  
Mark Benkart

### DIRECTOR OF PHOTOGRAPHY

T Berry



The opinions expressed in Union Bug articles are those of the author and not necessarily those of the Beaver-Lawrence Central Labor Council or its officers.

# President's Report

By Rick Galiano  
Labor Council President

\* The Executive Board and delegates of the Labor Council extend our sympathy to the family of David R. Bupp. David died on July 17<sup>th</sup> as a result of an industrial accident at the TMK IP-SCO plant in Ambridge. He was a member of IBEW Local 712. He also was a member of USW Local 1211 when he worked at the Centria plant in Ambridge.

\* The 2019 Pa. AFL-CIO COPE Institute will be held on August 16-18 at Shippensburg University. The Labor Council will be represented at the Institute by John Howard Thomson, Wilbert Meyers, Kerriane Theuerl, Mark Benkart. The Institute will focus on how to build durable power for Labor through

making inroads with local government and electing union members. The Institute's focus will help our Labor Council to strengthen its 2019 effort to support candidates for local office who support the Union Movement. Our Labor Council interviewed and endorsed candidates for local offices in the spring primary and will consider endorsements for the November general election.

\* Happy Labor Day to all Union Brothers and Sisters on behalf of the Labor Council. I hope that all of our Labor Council delegates and members of our affiliated unions will attend the Northwest Area Labor Federation Labor Day Parade in Erie (see Page 6 of July, 2019 issue of NWPA ALF News, at the end of this issue of the UNION BUG

for additional details) or the Allegheny-Fayette Central Labor Council Parade in Pittsburgh. Also please consider attending the two-day Labor Day Celebration at Northmoreland Park in Westmoreland County (flyer attached to end of this issue of the Union Bug).

\* The food and beverages at the July Labor Council meeting were sponsored by SEIU Healthcare Pa. The food and beverages at the August meeting will be sponsored by USW Local 9305.

\* The Northwest Pa. Area Labor Federation executive board members elected at the 2019 NWALF annual meeting/convention on June 26<sup>th</sup> in Erie are listed below.

## 2019 NW ALF Executive Board Members

### Officers:

Chair – Andrew Harkulich  
S\_T – Philip Lasky  
V-chair – Julie Bamett  
V-chair – J. David Henderson  
V-chair – Gary Bittner  
V-chair – Richard Galiano  
V-chair/Trustee – Frank Telesz  
Rep GMP/Trustee – Anthony Modaffare  
Rep GWCLC/Trustee – Walter (Pat) Geiger

### Union Reps:

Rep AFSCME – Shane Clark  
Rep APSCUF – Andrea Wyman  
Rep ATU – Pattie DeMichele  
Rep IAFF – Greg Laird  
Rep IBEW – Jim Nuber  
Rep IUOE – Rich Barrett  
Rep IUPAT – Giles Grinko  
Rep OPEIU – Jeffrey Hapke  
Rep PA JBWU – Linda Gomaa

### Union Reps continued

Rep PSEA – Mike Kalpich  
Rep Roofers – Jack Lee Jr.  
Rep SEIU – Mike Butler  
Rep UA – Dennis Pry  
Rep UFCW – Daryl Busch  
Rep USW – George Bryan

### CLC or Chapter Reps:

Rep B CLC – Jim Saeler  
Rep B&CTC – Darrell Niemenski  
Rep B-L CLC – Kerriane Theuerl  
Rep CECJ CLC – Jeff Miller  
Rep EC CLC – Rosanne Gangemi  
Rep I-A CLC – Jerry Shull  
Rep M CLC/UBC – Lonnie McFall  
Rep V-C Chapter – C.J. Pete Kluck  
Rep W-F CLC – Archie Graham

### Director:

Rosann Barker

# Community Services Report

By Mark Benkart  
Community Services Chairman

The annual Pennsylvania AFL-CIO Community Services Institute was held on July 10<sup>th</sup> through the 13<sup>th</sup> at the Sonesta Hotel in Philadelphia, Pa. It opened with a few words from Frank Snyder, Pa. AFL-CIO Secretary-Treasurer. The keynote speakers were Patrick Elding, Philadelphia City Council President; David Fillman, Pennsylvania AFL-CIO Community Services Chairman; and David Lewis, United Way of Greater Lehigh Valley President.

Some of the many informative workshops were: "How to attract Young People to Labor Unions", "How to Publicize your Community Services Project", and "How to Recruit, Include, and Engage Volunteers".

On July 11th, we participated in a rally in front of the Hahnemann Hospital with at least 500 people. Participants included members of the Pennsylvania Association of Staff Nurses and Allied Professionals, which represent 800 employees, and members of many other unions. Doctors and con-

cerned local residents also participated.

Hahnemann Hospital's parent company, Philadelphia Academic Health System has declared bankruptcy and plans to close the hospital on September 6<sup>th</sup>, 2019. This hospital has served the community for over 170 years. Governor Wolf supports keeping it open. Hopefully, with his support, this necessary institution can be saved.



Labor Council Vice-President Mark Benkart and Pa. AFL-CIO Communications Director Samantha Shewmaker at the Pa. AFL-CIO Community Services Institute held on July 10-13 in Philadelphia.

## In Brief



Labor Council delegate Christ Atsidis, USW Local 1211, delivering a power point presentation, "The Great Steel Strike of 1919: Laying the Foundation for the CIO and SWOC, at the USW District 10 Conference in Atlantic City on July 15<sup>th</sup>. September 22<sup>nd</sup> marks the 100<sup>th</sup> anniversary of the strike. Approximately 365,000 steelworkers walked off the job during the course of the strike. See Page 3 of the July UNION BUG for additional information.



Labor Council Executive Vice-President presenting Donald McNutt Scholarship awardee Grace Canchola with a certificate of award at the July Labor Council meeting. Grace was selected to receive the \$1,000 scholarship on the basis of her written submission to the Labor Council's evaluators pertaining to this year's essay question: "What impact does buying "American-made, Union made" product have on our economy." Grace is the daughter of Sheetmetal Workers Local 12 member Eugene Canchola. She will attend Mansfield University of Pennsylvania.

## UNION BUG to begin its sixth year of publication

This August 2019 issue of the UNION BUG completes our fifth year of publication.

The editorial staff would like to thank the many union leaders and members who have contributed articles over the years that have helped to make the BUG an important voice for the Labor Movement in Beaver and Lawrence counties.

The Bug is emailed out to over 300 people/organizations. It

is posted on the NW ALF website, and many locals send it out to their memberships.

And yet we know that the BUG can be much more – a more comprehensive source of all things Labor in our area.

Spreading Labor's message is crucial, and the BUG is the most noticeable way of doing that in our area. As we begin our

sixth year of publication, we invite all locals to send us news

about their struggles and victories; interactions with our political representatives; and any attempts to violate labor agreements or the labor laws.

With your help we can strive to meet the goal of getting labor's message heard.

## SUPPORT UNION APPRENTICESHIPS

*Reprinted from July 26<sup>th</sup> issue of PA AFL-CIO newsletter*

Our Building and Construction Trades brothers and sisters are fighting to preserve union apprenticeship programs in light of a pending federal rule from the Department of Labor that would allow *Industry-Recognized Apprenticeship Programs (IRAPs)*.

This would allow businesses to create their own so-called apprenticeship programs, with minimal to no standards, without oversight, lower pay and worker protections.

Support Apprenticeships NOW [by logging on to [www.paafclcio.org](http://www.paafclcio.org) and following the instructions appearing in this article (July 26<sup>th</sup> issue) on how to make your voice heard].

Work in the building and construction industry is physically demanding, often surrounded by heavy equipment, toxic and hazardous substances, and extreme temperatures. **Safety and proper training are crucial in this industry.** According to the IBEW, "IRAPs are likely to exclude journeyman-apprentice ratio requirements, jeopardizing safety by opening federal projects up to an

influx of low-wage apprentices:

IBEW President Lonnie Stephenson, "the IBEW and our brothers and sisters in the building trades already run the most exemplary training programs in the country, building a workforce that commands industry-wide respect and is paid accordingly. . . the workforce could change in detrimental ways if the construction industry isn't exempted permanently from the new rule".

North America's Building Trades Unions President Sean McGarvey issued the following statement: "Based on our 100 years of experience running the world's most successful job training model, we know what works to meet specific demands of employers and an entire industry, while also providing workers with pathways to the middle class. Our \$1.6 billion annual investment, founded jointly with our industry partners without any tax dollars, trains hundreds of thousands of men and women at 1,600 registered training facilities located in every state and almost every Congressional district".

The period for public comment closes on August 26. Make your voice heard!

Union Label and Service Trades Department

## UNION MADE SCHOOL SUPPLIES



### ACCO BRAND PRODUCTS:

- FIVE STAR SCHOOL SUPPLIES AND ORGANIZATIONAL GEAR
- MEAD SCHOOL SUPPLIES
- TETRA PAK MILK CARTONS MADE BY USW LOCAL UNION 171 IN VANCOUVER, WASHINGTON

### BOARING SPRING PAPER PRODUCTS:

- MODERN JEN JOURNALS AND FOLDERS
- CONSTRUCTION PAPER
- POSTER BOARD
- DRAWING PADS
- SKETCH BOOKS
- COMPOSITIONS NOTEBOOKS
- WIRE-BOUND NOTEBOOKS
- BINDERS AND PORTFOLIOS
- INDEX CARDS
- ENVELOPES
- FOLDERS

### BOISE PAPER PRODUCTS:

- BOISE X-9
- BUSINESS CHOICE
- FLAGSHIP
- OFFICE DEPOT
- FASCOPY
- XEROGRAPHICS
- USA XEROGRAPHICS
- GRAND AND TOY
- W.B. MASON

### PACON BRAND PRODUCTS:

- ARTIST DRAWING/SKETCH PADS
- ARRAY CARD STOCK & BOND PAPER
- ART STREET CONSTRUCTION PAPER
- BORDETTE DECORATIVE BORDER
- CLASSROOM KEEPERS STORAGE
- COLORWAVE TAGBOARD
- COROBUFF 3D DECORATIVE BACKGROUNDS
- DECOROL ART ROLL PAPER
- ECOLOGY RECYCLED PAPER
- ELLA BELLA PHOTOGRAPHY BACKDROPS
- FADELESS PAPER
- FLAMELESS PAPER
- GOWRITE! DRY ERASE PADS
- KALEIDOSCOPE COLORED PAPER
- LITTLE FINGERS CONSTRUCTION PAPER
- NEON FLUORESCENT-COLORED PAPER PRODUCTS
- PEACOCK COLORED PAPER PRODUCTS
- PLAST'R CRAFT MODELING MATERIAL
- THE PRESENT-IT EASEL PADS
- RAINBOW COLORED KRAFT DUO-FINISH PAPER
- RIVERSIDE CONSTRUCTION PAPER
- SPECTRA ARTKRAFT DUO-FINISH PAPER
- SPECTRA ART TISSUE TISSUE PAPER
- SPECTRA GLITTER
- TRAIT-TEX YARN
- TRU-RAY CONSTRUCTION PAPER

*The Union Label and Service Trades Department, AFL-CIO does its best to verify that products listed on our "Do Buy" lists are made by union members. In many cases products are made by both union employees and in non-union plants. As well, many manufacturers produce goods in the U.S. and other countries. Be sure to check product packaging for country of origin and, of course, the union label. Should you see an error in our list please contact the department and we will correct our records. Don't see your union-made product listed, be sure to send us an e-mail and let us know what products your company makes and which union it is made by.*

**AMERICA IS AT ITS BEST WHEN YOU SHOP AND SAY "UNION YES!"**

BEAVER/LAWRENCE  
CENTRAL LABOR  
COUNCIL



We're on the Web:  
[pa.aflcio.org/349](http://pa.aflcio.org/349)

## Calendar of Events

- 08/12 Community Services/Moral Monday meeting: 7:00 PM; IBEW L.U. 712 Edwin D. Hill Complex, Vanport.
- 08/16 Pa. AFL-CIO COPE Institute: Conference Center at  
to Shippensburg University, 500 Newburg Road,  
08/18 Shippensburg, PA 17257.
- 08/19 Beaver-Lawrence Central Labor Council Executive Board and membership meetings: Executive Board - 6:00 PM; Membership meeting - 7:30 PM; PSEA Building, New Castle.
- 09/02 Labor Day. See Page 1 article: "Join the Labor Day Celebrations" and President's Report on Page 3 for information about Pittsburgh and Erie parades and Westmoreland County Labor Day Celebration.
- 09/10 "Building Power by Mobilizing our Members," a course of the Labor Activist Academy (Class 1); USW Headquarters 60 Blvd. of the Allies; Pittsburgh; 6:00 - 8:30 PM. (See attachments at the end of this issue of the UNION BUG for more information.)
- 09/16 Beaver-Lawrence Central Labor Council Executive Board and membership meetings: Executive Board – 6:00 PM; Membership meeting – 7:30 PM; IBEW Local 712 Edwin D. Hill Complex, Vanport.
- 09/17 "Building Power by Mobilizing our Members," a course of the Labor Activist Academy (Class 2); USW Headquarters 60 Blvd. of the Allies; Pittsburgh; 6:00 - 8:30 PM. (See attachments at the end of this issue of the UNION BUG for more information.)
- 09/24 "Building Power by Mobilizing our Members," a course of the Labor Activist Academy (Class 3); USW Headquarters 60 Blvd. of the Allies; Pittsburgh; 6:00 - 8:30 PM. (See attachments at the end of this issue of the UNION BUG for more information.)

Calendar of Events submissions must be emailed to Jody Kohser, Calendar of Events Coordinator, at [jkohser@verizon.net](mailto:jkohser@verizon.net), by 6:00 p.m. on (month) (date) to be considered for publication in the (month) 2019 Issue of the **UNION BUG**.

# LABOR DAY Celebration!

FREE ADMISSION • FREE PARKING

Sunday & Monday September 1 & 2, 2019

11:00 a.m. to 7:00 p.m.

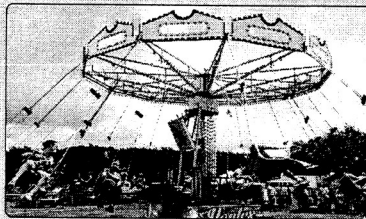
10:00 a.m. to 6:00 p.m.

## \$4 All Day Activity Pass

Access to: Carnival Amusement Rides,  
Greenfield Farms Petting Zoo,  
Horse Drawn Trolley Rides and  
the Zerbini Family Circus

New in 2019:

Bounce Houses, NERF Obstacle Course



### Sunday, September 1



#### The Townsmen Plus One

Variety, from Big Band to Jazz  
11:00 a.m. and 12:00 p.m.



#### Jessa Kenzi

Contemporary Country  
3:00 p.m. and 4:00 p.m.

### Zerbini Family Circus

An old-fashioned, family-owned  
Circus under the Big Top!

Activity Pass Wristband Required.

Sunday: 12:00 p.m., 3:30 p.m. & 5:00 p.m.

Monday: 11:00 a.m., 2:30 p.m., 4:00 p.m.

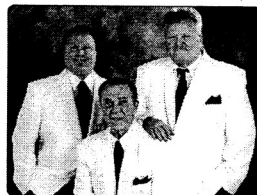
**Arts & Crafts Show**  
**Giant 2-Day Flea Market**  
**Food & Refreshments**  
**Bingo**

### Monday, September 2



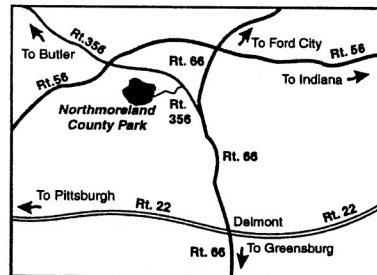
#### Thieves

Performing a perfect blend of  
60s, 70s, 80s, and today's rock  
11:00 a.m. and 12:00 p.m.



#### Chuck Blasko & The Vogues

A Labor Day Tradition!  
3:30 p.m. and 4:30 p.m.



Northmoreland Park is located in Allegheny Township  
and is accessible via State Route 356 from State  
Routes 56 & 66.

**Dogs & Other Pets  
Not Permitted!**

SPONSORED BY



#### That Guy With The Birds

Educational as well as Entertaining!

Sunday: 12:00 p.m., 3:00 p.m., & 5:00 p.m.

Monday: 11:00 a.m., 2:00 p.m., & 4:00 p.m.



The Westmoreland  
County Board  
of Commissioners

This program is supported by Pennsylvania Partners in the Arts (PPA), the regional funding partnership of the PA Council on the Arts, a state agency. State government funding comes through an annual appropriation by the PA General Assembly and from the National Endowment for the Arts, a federal agency. PPA is administered in this region by the Pennsylvania Rural Arts Alliance.

Website: [www.co.westmoreland.pa.us/parks](http://www.co.westmoreland.pa.us/parks) Facebook: WestmorelandParkandRec Twitter: @WestCoParksRec



## Your Role In The Union

The decision you have to make, as an individual represented by a union, is really no different from your obligations as a member of society. You can choose not to be informed about union issues and not to participate in the daily life of the union. Then, just as with what happens in the larger society, you can gripe about who's running the union and the decisions they make. But there is an alternative, of course: since your union is nothing more than a collection of individual members, you can choose to become involved, and in doing so shape what your union is and what it does.

So if you want to "own" your union and to share in the members' responsibility of running it, what can you do?

- Educate Yourself
- Be a Set of "Eyes and Ears"
- Show Solidarity
- Be a Union Emissary
- Get Involved



The union is you and your co-workers; you have it within your power to make your union an ever-more-effective fighter for workplace rights and justice.

**LABOR DAY** was created in 1882 when union workers took to the streets to educate the public as to who is unionized, what they do, and what their issues are. They had two goals: to build Solidarity within the labor movement and garner public understanding and support for their issues.

Labor Day is dedicated to the social and economic achievements of American Workers. It constitutes a yearly national tribute to the contributions workers have made to the strength, prosperity, and well-being of our country.

Join us in Solidarity in Erie, PA on Monday, September 2nd and prove that LABOR is alive and well in NWPALF and continues to be a vital part of our communities.

The theme of this year's parade is "Unions Unite a Community" was submitted by Samuel Vrenna from Harborcreek High School.

IUOE (Operating Engineers) Local 66, Highmark Blue Cross Blue Shield, Clearfield-Elk-Cameron-Jefferson CLC, IBEW 1319, and IBEW 56 are our Prime Sponsors without them and the many other sponsoring unions, businesses, and organizations, we would not be able to hold this parade.

Our success depends on your participation!



### 2019 NWPALF Labor Day Parade Application Parade: Monday, Sept. 2nd

Line up: Vehicles 8:30AM &  
People 9:30AM  
Step off: 10:00 AM

Entries Close: Monday, August 5th  
Parade Route: 11<sup>th</sup> & State to Perry Square



Organization: \_\_\_\_\_

Name \_\_\_\_\_ Title \_\_\_\_\_

Phone # \_\_\_\_\_ Email \_\_\_\_\_

**NOTE: All units must have a banner for recognition. Discounts are available at our Union Printers for banners, flags, signs, shirts and more.**

Signature \_\_\_\_\_ Cell Phone \_\_\_\_\_

We understand participation is FREE and wish to enter the following in the Labor Day Parade (checkmark all that apply):

- a Decorated Float  Vehicle/s
- Local Union  District Council  International Union
- Marching Unit  Clowns  Color Guard or Other: \_\_\_\_\_

**Mail to: NWPALF 1276 Liberty St. Ste. 2, Franklin, PA 16323**

### 2019 Labor Day Parade Candy Order Form

George J Howe Candy Company is offering us a great deal on bulk candy for the Labor Day Parade. Many of the products below are union made, but not all. If you are interested in ordering through the NWPALF Area Labor Federation so you can take advantage of these great deals. **Deadline: Tuesday, August 6th.**

Pick-up Date from IBEW 56 Hall at 185 Pennbriar Dr., Erie, PA 16509, is Tuesday, August 27th. All orders must be prepaid. Send your check and order to NWPALF 1276 Liberty St. Ste. 2, Franklin, PA 16323.

Candy Order Form for NWPALF Labor Day Parade

Name	Contact
Address	Phone
City/State	Zip
Authorizing Signature	Print name

Item Name	Weight #	Special	Qty	Cost
Champagne Mix *1	30	\$ 44.84	\$	-
Tootsie Rolls	30	\$ 69.85	\$	-
Fruity Tootsie Rolls	30	\$ 69.85	\$	-
Caramel Creams	30	\$ 54.80	\$	-
<b>total order</b>			\$	-



# THE LABOR SCHOOL

AT PENN STATE



## PITTSBURGH LABOR ACTIVIST ACADEMY



» **Location:** Classes will be held from 6:00-8:30 p.m. at **United Steelworkers**  
60 Boulevard of the Allies,  
Pittsburgh, PA 15222  
(\$5 Parking Available in  
Garage Below).

» **Cost:** The cost for each three-week course will be \$75 per participant. (Total cost for all four courses is \$300).

» Register and pay here  
[www.cvent.com/d/b6qs74](http://www.cvent.com/d/b6qs74)

» Please see the course schedule and registration details on reverse.

The Allegheny-Fayette Central Labor Council, AFL-CIO, and The LABOR School at Penn State will host a series of labor education workshops designed to better equip labor union stewards, labor activists and leaders to meet the challenges facing today's labor movement.

All local unions and invited community allies are eligible to send members to participate.

The curriculum consists of four comprehensive non-credit courses designed to develop critical thinking skills and to increase capacity for building power. The courses encourage participation and networking with other activists.

Participants should commit to attending all three sessions of each course.

Instructors will include faculty from The LABOR School at Penn State, labor leaders and community experts. Participants who complete all four courses will graduate with a certificate of completion from Penn State.

*"I've been a union member for over 15 years and have learned so much in these classes. I now know how to answer workers' comp questions for my fellow shop members. The history section puts into perspective what has been fought for and what has been obtained by the union members before us. I would take this class again!"*

- Amy Gitler  
Chair, Chapter 13 SEIU 668

*"The labor movement has been under attack for decades and if we want to not only survive, but thrive, we need to educate our members. Engaging our members is key to transforming the union movement and these courses are designed to do just that. This is a well thought out curriculum with engaged instructors."*

- Dennis Hower  
President, Teamster Local 773

# “Building Power by Mobilizing Members”

3 session course begins Sep 10

“Building Power by Mobilizing our Members,” a course of the Labor Activist Academy, will begin on September 10<sup>th</sup> at the USW Headquarters downtown.

There will be three sessions in this course: Sept 10, 17 and 24 from 6:00pm to 8:30pm, all the USW Headquarters on the Boulevard of the Allies, and the cost is \$75 for all three.

The Labor Activist Academy, hosted by the Allegheny-Fayette Central Labor Council, PA AFL-CIO, and The LABOR School at Penn State, is a series of courses designed to better equip labor union stewards, labor activists and leaders to meet the challenges facing today’s labor movement.

“Building Power by Mobilizing our Members” will focus on the basic elements to more successfully engage and mobilize fellow members, with the premise that renewing our labor movement begins with organizing our own members and learning how to engage them as active participants in the work of labor.

Pre-registration and payment are required one week before the first session you are registered to attend. Please register here: [www.cvent.com/d/b6qs74](http://www.cvent.com/d/b6qs74).

If you have questions, please contact [zach.zobrist@psu.edu](mailto:zach.zobrist@psu.edu) or at 412.303.4382.